

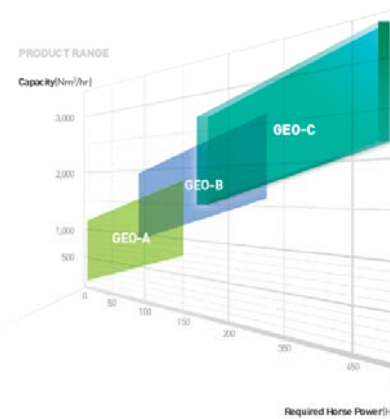
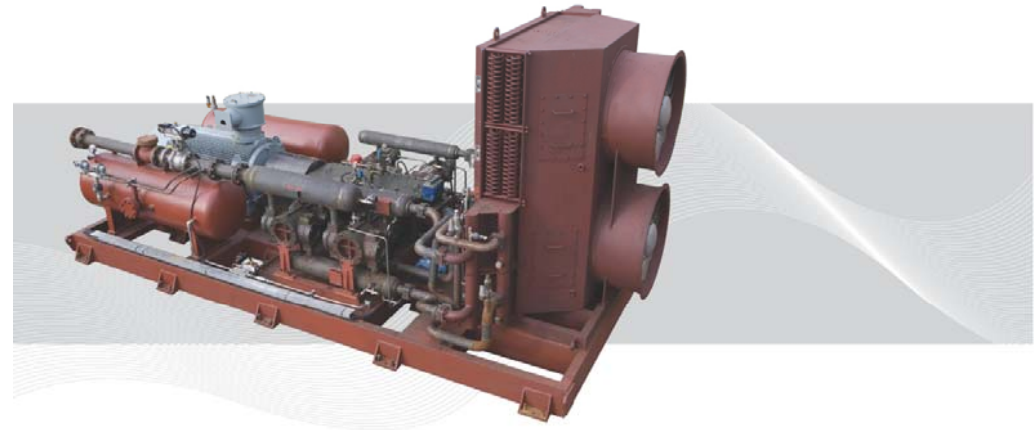
KwangShin

# KwangShin CNG Compressor

- 흡입압력 : 0~200 bar
- 토출압력 : 250~350 bar
- 처리용량 : 1,000~4,500 m<sup>3</sup>/hr
- 소요동력 : 300~600 Hp
- 구동기형식 : Motor / Gas Engine
- 구동기와 압축기는 직결 형태
- Horizontal Balance Type Compressor Design
- Air Cooled/Water Cooled Type Heat Exchanger

## GEO-C2&C4

MOTOR/ENGINE DRIVEN



- Suitable for large public or mother fueling stations
- Motor / Engine power from 300Hp to 600Hp
- Variable inlet pressure
- Compressor with force feed lub. System
- Electric motor or engine driven
- Air or water cooled heat exchanger
- Pneumatic or gas Controlled Purge System

	C2	C4
• Number of throws	1/2	3/4
• Stroke (mm)	80/90	80/90
• RPM (max)	1,800	1,800
• Piston Speed (m/s)	4.8 / 5.4	4.8 / 5.4
• Hp / Throw	200	150
• Rod Load (kg)	8,500	8,500
• Main Diameter (mm)	125	125
• Rod Diameter (mm)	40	40
• Crank Shaft	Forged Steel	Forged Steel
• Connecting Rod	Forged Steel	Forged Steel
• Cross Head	Cast Steel	Cast Steel

